

MUNICIPAL CORPORATION OF GREATER MUMBAI

No. CH.E./D.P./ 015909 /Estt. dtd. 01/9/2018


OFFICE ORDER

Since, Sanctioned D.P. 2034 will be effective from 1st Sept. 2018, it is essential to form Planning Cell, D.P. Implementation Cell and DCPR Cell as per the approval of Hon. M.C. u/No.MCP/7495 dtd.23.02.2017. Hence, it has been decided to restructure D.P. Dept. as per the enclosed arrangements under Dy. Ch. Eng. (D.P.) - I and Dy. Ch. Eng. (D.P.) - II.

The Dy. Ch. Planner and staff under him will work on those posts till the regular appointments are made by the City Engineer Dept. The Engineers under E.E.(D.P.) Implementation and E.E.(D.P.) DCPR shall work in D.P. (Impl.) & DCPR Cell respectively, in addition to their regular works.

This office order will be effective from 1st Sept.2018.

Encl. : 2 Restructure Charts

 31.8.18
Chief Engineer (D.P.)

Dy. Ch. Eng. (D.P.) - I

Dy. Ch. Eng. (D.P.) - II

E.E. (D.P.) - P, City, WS, ES, DCPR, Impl.

Dy. M.A. (D.P.)

Dy. Ch. Planner

A.E. (D.P.) - City -I, City-II, H/E, H/W, K/E, K/W, P, R/S, R/C, R/N, L&M, NST, TP.

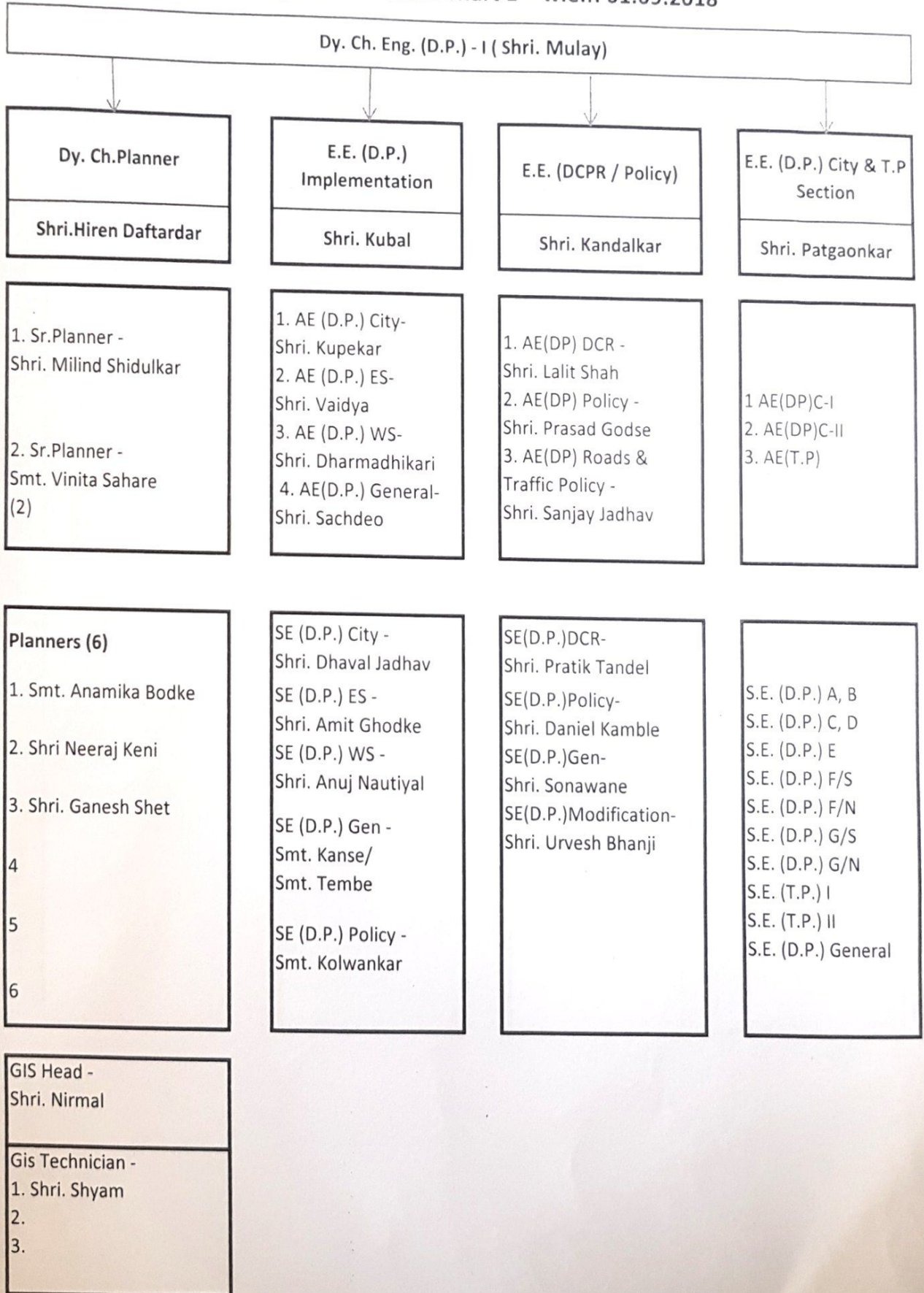
Sr. Arch.(D.P.) (Smt. Anamika, Smt. Sahare, Shri. Shidunkar)

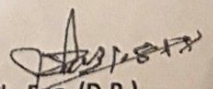
All S.E. (D.P.)

S.E. (Arch) (Shri. Neeraj)

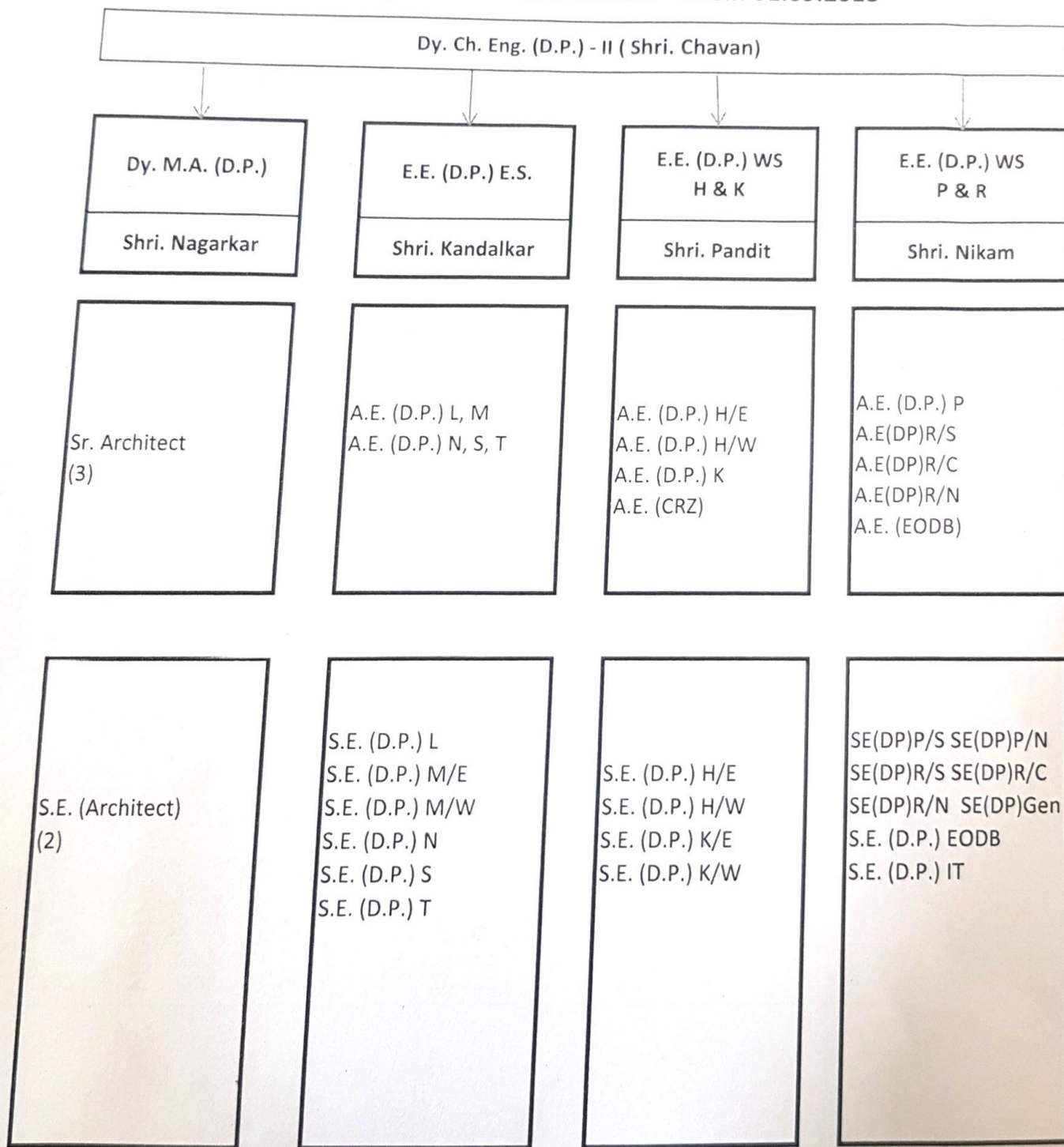
A.O. (D.P.)

D.P. Dept. Restructure Chart 1 - w.e.f. 01.09.2018




 Ch. Eng. (D.P.)

D.P. Dept. Restructure Chart 2 - w.e.f. 01.09.2018



Policy/General Matters in Development Plan Department. (August-2018)

EE(DP) City/ TP	EE(DP) ES	EE(DP)WS. H & K	EE(DP) WS. P & R	EE(P) to ChE-DP
Shri. R.G. Padgoankar	Shri. C.H.Kandakar	Shri. S.P.Pandit	Shri. G.B.Nikam	Shri S.V.Bhat
MHADA 33(5)/Mill land and relevant DCR	Repair policy in respect of slum	MUIP, MUTP	R.G./P.G/ School policy/ Market Policy	PEATA/ MCHI/NARDCO
All work related with TP.	Telecom Antennae	MHADA, MMRDA, JNURM	MTSU/ Forest - WS.	BP Matters / General issues.
Scrutiny Committee related to Municipal properties of City./ Repair policy in island city	Scrutiny Committee related to Municipal properties of ES.	Scrutiny Committee related to Municipal properties of H&K ward.	Scrutiny Committee related to Municipal properties of P & R ward.	Circulating/uploading of modifications/notifications/policy circulars.
DPDC Meeting (City)	PM Awaz Yojana	UMTA Suburbs	COD/MOD	
B.P./D.P. Security fees, revenue matter, annual revision of fees/ premium of staircase/ fee structure, Development charges, Factory permit fee, Monsoon shed fee etc.	Datum Line - Slum and tolerated structure.	Online generation of DP remarks	EODB /Auto DCR-1967, 1991,2034,Manori-Gorai/ SWCS/ One GIS & Attributes uploading / ESRI /Auto-CAD/ FAQs / /One GIS / BP related issues/ Online generation of remarks/completion certificate of various dept required for construction permit.	
Star Category Hotels	Forest - ES.	SATIS	Forest Land-WS	

Policy/General Matters in Development Plan Department. (August-2018).

EE(DP) City/ TP	EE(DP) ES	EE(DP)WS. H & K	EE(DP) WS. P & R	EE(P) to ChE-DP
Shri. R.G. Padgoankar	Shri. C.H.Kandakar	Shri. S.P.Pandit	Shri. G.B.Nikam	Shri S.V.Bhat
Night shelter/ Ambedkar Awas Yojana/Ashray Yojana/ Shram Safalya.	Salt Pan land./ Transport Authority Central Railways, Mono, Metro-ES	CRZ / Mangroves, Gaothan / Koliwada.	Roof Top, C1 category/ structural Audit/ Bottleneck policy	
Generation/issue of online TP Remarks.		Generation/Utilisation online TDR Software	Software application and integration with various depts under EODB.	
UMTA related to city/ Noise pollution, handicapped policy. Urban Mobility/ Transport Authority Central Railways, Mono, Metro-City.	All matters related to Housing dept.(a) Eco. Housing (b) affordable Housing (c) Slum rehabilitation by Govt.	DPDC meeting E. S. Suburbs and W.S./ Transport Authority Central Railways, Mono, Metro-WS	Pvt. Layouts Prakash Mehta committee./ Afzalpurkar Committee.	
Administrative/ Establishment work/ RTI Manual	All policies / Modifications W.R.T DCPR / DP-2034/ PEATA/ M.C.H.I. Issues.		All policies/ Modifications W.R.T DCR / SRDP- 1991/ PEATA/ M.C.H.I. Issues.	
Acq. Matter of City	Acq. Matter of ES	Acq. Matter of H&K	Acq. Matter of P&R	
Budget Provision-City	Budget Provision-ES	Budget Provision- H&K	Budget Provision- P&R	


 Chief .Engr (DP)

C.C. TO- Dy.Ch.E.(DP)-I/II/ EE (DP)-City / ES / H&K / P&R/ A.O.(DP)-I/II.

c/84

c/85